



**Building Projection
and
Planning Coordination
GmbH**

*CONSULT- PROJECT
BUILD- TRADE*

Telefon +49 (0) 15225826313

Fax +49 (0) 40 25 73 73

E-Mail:info@bpapc.de

www.bpapc.de

Build with BPAPC Building Projection and Planning Coordination

The BPAPC GmbH offers "everything under one roof"

Starting with consulting , Planning and up to complete turnkey finishing.

From one single building up to complete complexes with Infrastructur, you find us as the best Partner.

We will convince you with our professionall and creative work methods!

What sets us apart, is our Philosophie and our understanding of architecture.

We have avery good experience in planning, excuting and consulting of projects.

We are for the modern architectur

The BPAPC GmbH is a company which has been merged in 2011 with the company ASS GmbH,which is Known since1993.

In 2009, the concrete factory Rathnow and the daughter company Elektrotechnik Schnoor GmbH are integrated in the group.

The BPAPC GmbH has other branches in other lands, in Swtizerland (Basel), in Iraq (Baghdad) and in the USA(Los Angeles)

Since we established our company completed very successfully many larg projects. (look at the following projects and references). Our goal is always to perform a moderne service in consulting,Planning, and producing, her we provide you a proffesional performance through our long time of activities.

The distinuishing of BPAPC GmbH (Building Projection and Planning Coordination)comes through :

With us you base on:

A very clear understanding of architectur

A very creative and experienced team

Flexible Project settings

A wide range of services

Punctuality

Costs oriented constructing

The executive board

your partners in

BPaPC Building Projection and Planning Coordination

The responsables of the BPaPC and thier Team are for competence, engagement and long time Project experience.

See for yourself and get to know us better.



Manager

Olaf Hans-Detlef Schnoor

Technic, purchase, planning, constructions supervision

co-founder of the BPaPC GmbH



Manager

Ahmed Al- Zoubeidi

Distribution, plannning, construction supervision

Dipl.-eng. Architect

co-founder of the BPaPC GmbH

Presentation of the performance profile

Building construction execution

We design, develop, plan and construct residential and trade, in cooperation with clients and agencies. Through our complete offer, we are capable with our very good experienced team to finish all the construction projects completely and as you wish keyturn and on time.



Precast plant

Our team is quite capable of casting, delivery, and assembling all under on roof, that will reduce, time, error sources, and increase the quality.



Deep piping and pressure drainage Hamburg

With our partner company
Meyer Rohr und Schacht
And our daughter company
Elektrotechnik Schnoor GmbH



REFERENCE PROJECTS

Fielmann AG optic factory in Rathenow Germany

Contract value

wholsystem: 15.750.000.-

Execution

whole project: 1994 - 1996

contact

customer: Dr. Sirega



In the city of Rathenow, state of Brandenburg the cradle of German glasses production we constructed the produktion- and Logistik centre for the german famouse glasses producer, Fielmann AG in 1994 -1995. We developed a competence for production and logistics of order-related, miniral and plastic glasses.

This factory employes 600 person.

The design of the plant meets all requirements for a capacity expansion in the wake of ongoing internationalization. A two-shift system delivers in average more than 14,000 glasses per a day, there are more than 35,000 orders.

Hoya Lences Germany GmbH Mönchengladbach factory

| | |
|-----------------------|---------------|
| Contract value | |
| Whole syste: | 14.850.000.- |
| Execution | |
| Whole project: | 1984 - 1986 |
| Contact | |
| Customer: | Mr.Wittenberg |



The Hoya Lences Deutschland GmbH in Mönchengladbach, is the central factory in Germany since 1996, it is a daughter company of the Hoya Corporation in Japan, which is one of the worldwide leaders in the developing and producing of highquality opticals. Hoya has three factories in Germany the other two are in Hamburg and Müllheim.



Hoya Lences Germany GmbH Hamburg factory

Contract value
Whole system: 10.150.000.-

Execution
Whole project: 1994 - 1996

Cnotact
Customer: Mr. Knaack



The Hoya Lences Germany GmbH Hamburg's factory, is the first branche in germany as a daughter company of Hoya Corporation in Japan.

In hamburg are employed 185 person .

Hoya Lences Germany GmbH Müllheim factory

Built in 1996

Contract's value

Whole system: 10.150.000.-

Execution

Wholeproject: 1994 - 1996

Contact person

Custom: Mr. Wittenberg

The Hoya Lences Germany GmbH in müllheim is a hundred percent daughter company of the Hoya Corporation in Japan, this factory employes 100 person.



Technician health insurance Headquarters in Hamburg

Extension 1992 – 1995

Volume: about 14.000 m³

Contract value
whole system: 17.750.000.- DM

Execution
whole project: 1992 - 1995

Contact person
customer: Mr. Harrms

The Administration building of the technician health insurance in hamburg bramfeld, was built on the grounds of the old Voss Margarine factory. The old main entrance which is a conservated heritage, is used as

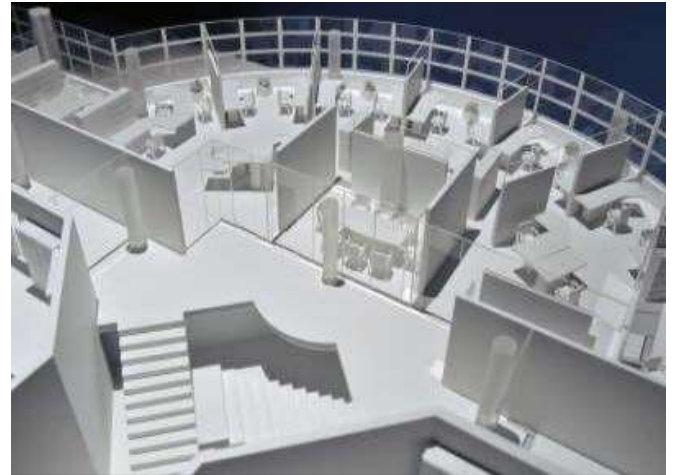
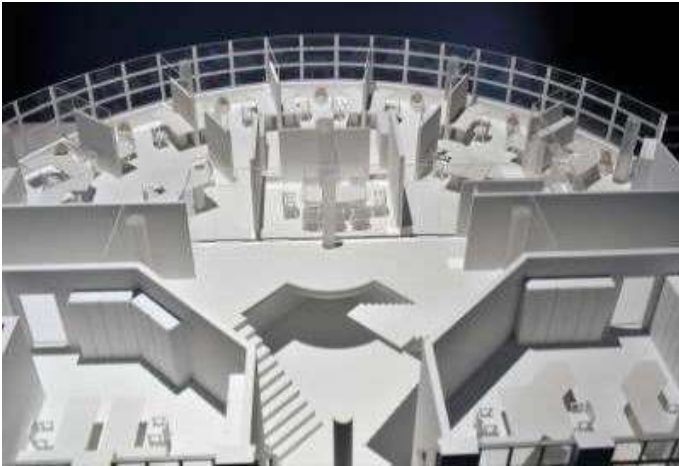
the main entrance for the neu building. The technician health insurance (TK) is one of the large insurances allover germany with about 7,9 million insured persons. It was established in Leipzig in the 3rd. August 1884 as "the registered help cashbox for the german Architects, engineeres and technicians".

Houahold about 19,1 Milliarden euro.

11 683 clarks (514 trainees).



The Rondells model in the planning phase



Administeration complex after finishing



HPV chocolat factory
Hamburg Wendenstraße
Moderning and extending
extending 1994 – 1997

Volum 6.900 m³

Contract value

complete system: 6.750.000.-

Execution

Whole project: 1992 - 1995

Contact person

Customer: Mr. von Bismark



The old „Schokoladenfabrik“ was built in 1908. The roof floor and the Giebel were destroyed in the 2nd world war. The roof floor was rebuilt, a new floor in the west building was built. 1994-1997 the whole building is changed into büros, photostudios and ateliers.

On a historical reconstruction has been deliberately avoided here, but it was for restoration and rebuilding the program, not to erase the traces of the war and after the repairs. So the bricks indicate the exterior facades and in the yard damage, not only the ravages of time are due. The iron bars of the staircase window has bends that result from heat and pressure.

The simple post-war level, together with his blanket on the western part remained in the conversion the engine and the basis for the new roof made of aluminum corrugated metal, glass and steel, in a formal language, which takes up but with segmental arch motif of the brick building, especially the static potential and generates qualities of today's building materials to express

Conversion and extension of a monumental chocolate factory into loft
Commercial and residential.

Chocolate factory at night



Chocolate factory backside



**The old boiler plant is changed
into an exhibition hall**

pontoon system





Reception



Büro with gallerie



Penthouse balkony



A büro in the boiler plant



The new Westend village

Headquarters Hamburg

Restoration, renovation and new construction expansion

Volume about 32.000 m³

Contract value

Whole system: 25.550.000.-

Execution

Whole procekt: 1994 - 2009

Contact person

customer: Mr. Vogler



Das architecturally complex has 80 residential lofts and about 9.000 m² büro andcommercials. The flates have individual areas between 32-220 m². The versatile continuous office lofts are between about 45 and 950 m². Its features include parquet floors of residential lofts, quality designer kitchens, marble bathrooms and spacious walk-in closets and washing machine connections. In general, the lofts also have separate guest toilets. In addition to old style elements, such as cast-iron columns, double-leaf wood doors and skylights, the office lofts are supplied with separate sanitary tracts, parquet floor, equipped partly steel glass walls and high quality pantry kitchen. Of course there are connections of all modern communications. . The building complex was built in 1901-1904 according to plans of the military construction officials Gobel and Hagemann style Neo Renaissance. (photo 1932)

**Sketches of the planned building new old stock buildings and commercials
Residential lofts and commercials**



Planning

and

realization



Planning

and

realization



New Westend village finishing, 2011



The Westend Village

The old building complex

The old building complex (in blue) was built in 1901-1904 according to plans of the military construction officials Gobel and Hagemann style Neo Renaissance

It is largely built around multi-storey red Klink gables with ornate brick and Neo Renaissance view

Ground floor, white plastered surfaces on the upper floors, brick and highlighted, window frames with historic decor.

The closeness of the well-preserved, representative, emphasized by pediments, and numerous decorative elements risalti systems that determine their appearance also in an outstanding way since the beginning of the 20th Century, the site of ‚Bahrenfield‘.

The entire system was rebuilt in the light of monument protection, an attractive, modern residential and business park. It was important to preserve the flavor and charm of the past century.



Administration and working team of BPapC GmbH Eastern 2011



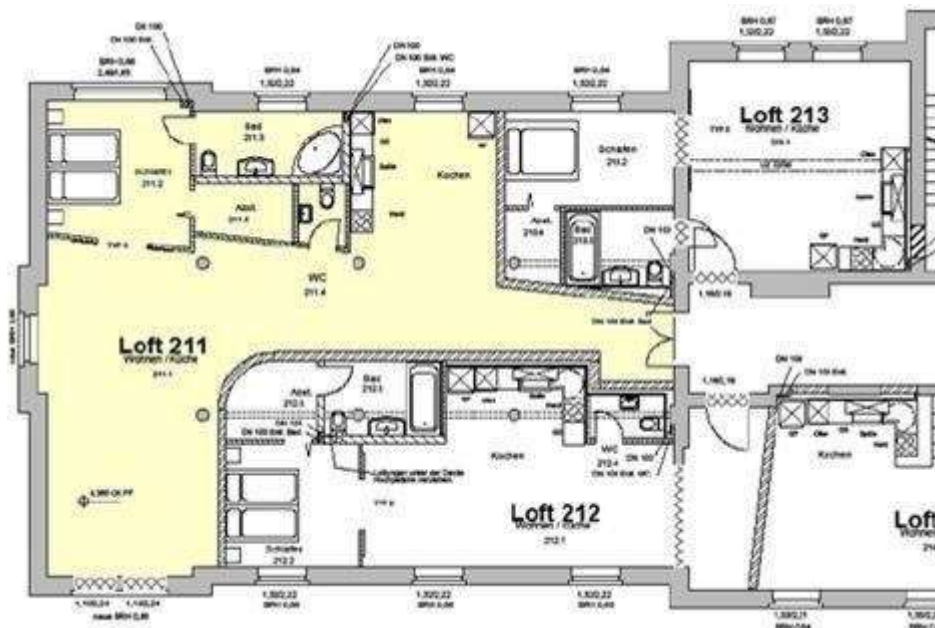
completely modernized old building, buildings 5, 6 und 1



Completely modernized old building, building 2



Example, a loft layout , building 2



A complete unit, fitness hall with pool and gardine



Fitness hall with aview on the park and pool



The old workshop changed into a buro



Living loft with a lрге roof window



Warehouse changed into a large buro with galerie



The warehouse as an engineering buro



Living loft photographed from the galerie, kitchen and living room.



A large buro hall, building 6



Piping and pressure drainage, Hamburg

With our Partner company (Meyer Rohr und Schacht)

and our daughter company (Elektrotechnik Schnoor GmbH)



For drinaging of hamburg

| | |
|-----------------------|--------------|
| Contract value | |
| Whole system: | 34.820.000.- |
| Execution | |
| Whole project: | 1996 - 2011 |
| Contact | |
| Customer: | Mr. Welzel |



For the piping of Hamburg and many other cities in Germany, Polymerconcrete pipes are used because of their very high corrosion resistance, hohe Tragfähigkeit and diffusion seal. which are the Main factors why we choose Polymerconcrete for waste water and drainage canals. Due to the GFK- preassembled plug coupling a 3 meter pipe will be simply and very fast assembled.

Like all MEYER products you get a very modern and developed quality control.

They offer high reliability for generations and are therefore very economical. Since the channel tubes are provided for the open installation, they can be produced with a thinner wall thickness and it saves on material and weight.

| nominal diameter | external diameter | internal diameter | length | weight |
|------------------|-------------------|-------------------|--------|--------|
| 100 | 110 | 90 | 3000 | 120 |
| 150 | 160 | 140 | 3000 | 270 |
| 200 | 210 | 190 | 3000 | 420 |
| 250 | 260 | 240 | 3000 | 675 |
| 300 | 310 | 290 | 3000 | 1020 |
| 350 | 360 | 340 | 3000 | 1365 |
| 400 | 410 | 390 | 3000 | 1710 |
| 450 | 460 | 440 | 3000 | 2055 |
| 500 | 510 | 490 | 3000 | 2400 |

The high capacity of the pipes allows the installation of only a wall thickness per nominal diameter. This wall thickness is chosen so that about 85% of the applications are covered. The rest will be additional measured in the storage tube (fixed rather than loose bedding). This unit series simplifies storage and delivery scheduling, thus improving the delivery service.

Propulsion systems

With POLYCRETE[®] pipes, we have made used for decades in the industry because of its strength, corrosion resistance and elasticity of polymer concrete for the modern civil engineering available. The pipe business has claimed most of the concentration. This is especially the POLYCRETE[®] jacking pipes DN 200 and the backbone of the pipe sales.

The underground pipe jacking is now an international growth market.



The demand for national and international high quality jacking pipes is steadily increasing, not least because of the excellent mechanical properties of the material POLYCRETE[®].

In addition to our POLYCRETE[®] jacking pipes we offer POLYCRETE[®]-oval pipes and channels, as well as for special measures tubing.

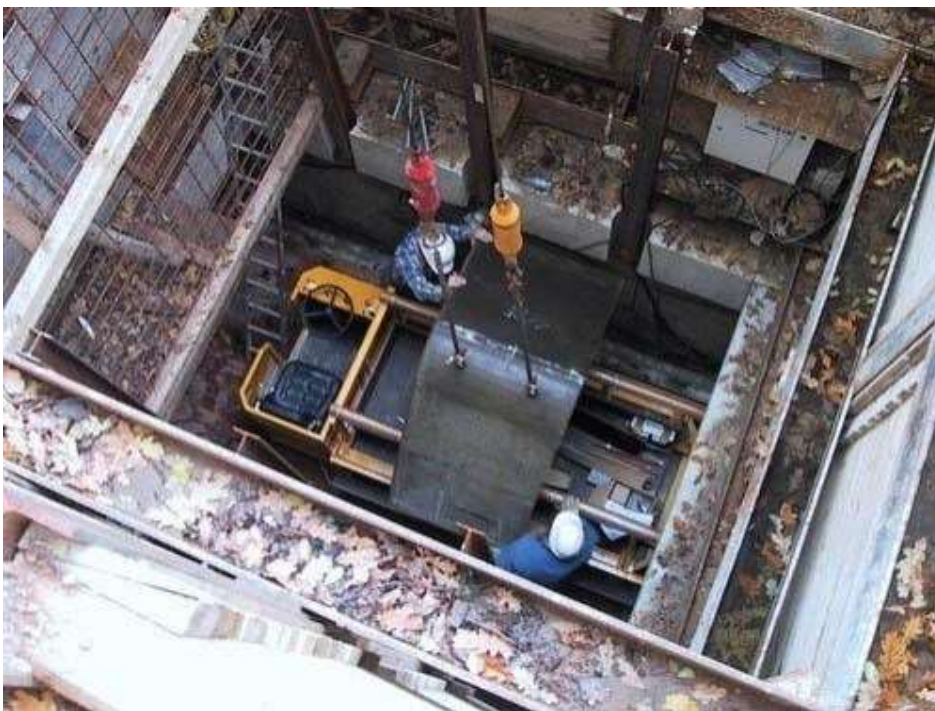
Provides for the pipeline and storage of large collectors in the chanal Rüttelfertigung manufactured in hardened steel and formwork THIXOCRETE[®] reinforced concrete pipe has a large economic and quality solution. THIXOCRETE[®] is ideal for pipe jacking, and open trench and is from Meyer Rohr + Schacht GmbH from DN 2000 to DN 3500 offered .



MEYER ROHR + SCHACHT GMBH



POLYCRETE® pipes are for many long years in the industry, and the used material polymer concrete is used for the modern deep piping because of its stability, corrosion resistance, and elasticity.



Das Material : gefüllter Reaktionsharzformstoff.
The material properties and measurements are in the DIN 54815.

POLYCRETE® pipes from MEYER are distinguished through:

- High pressure resistance
- Smooth, regular, non-absorbant external layer
- Exakte Planparallelität der Stirnflächen = gleichmäßige Druckübertragung
- Extreme small tolerance
- Optimum elasticity
- Low weight
- Adjustable measurement
- Complete System
- Smooth, regular internal layer which means a high flow
- High corrosion resistance which means a long performance safe examined swelling resistance.

POLYCRETE® pipes up to DN 1200 and because of the economical and environmental properties, have been fastely developed and reached a very high technical standard in the last few year all over the world.



MEYER ROHR + SCHACHT GMBH



Open channel piping

The POLYCRETE® oval section - pipes from Meyer are ideal for the piping systems of mix-water channels, their corrosion resistance, reliable sealing, high bearing and deliverability in all size according to DIN 4263,

are some of the benefits you recognize immediately.



The vaulted apart is very optimum for the load reception, and the inner space serves as storage and flow space.

The oval profil enables a better inspection possibility especially in the manual cleaning



MEYER ROHR + SCHACHT GMBH



This pipe profil will be often used when the water flow is in a large variety.

The oval form gives relatively a fast flow even with small amounts. Use of this hydraulic advantage will be made in the mix water channels.

POLYCRETE®oval pipes are coupled with couplings made of glassfiber reinforced rubber (GFK), which are used for long years in the normal pipe channeling.

The reason for that is: the high adjustability for every pipe form.



In the renovation of alrge collector in Frankfurt/Main for a whole length of 2,2 Kilometers, we used for the first time precast parts of polymerconcrete

as corossion defending lining.



MEYER ROHR + SCHACHT GMBH



The inlet to the main sewage collector's low wheel is in the years 1970 to 1972 in-situ concrete produced combined sewer. The box section with slanted sole has a length of 1450 meters, a cross-section width of 2.50 and 2 meters high and over the last 750 meters before the sewage treatment plant in 4 meters wide and 3 meters height. Now, after 30 years of operation, the collector had the typical biogenic sulfur corrosion damage patterns. The concrete walls and ceiling along the entire length of homogeneous 2 centimeters deep corroded. [...]

The primary purpose of this step was therefore to line the collector's with acid-resistant's Material.



MEYER GMBH

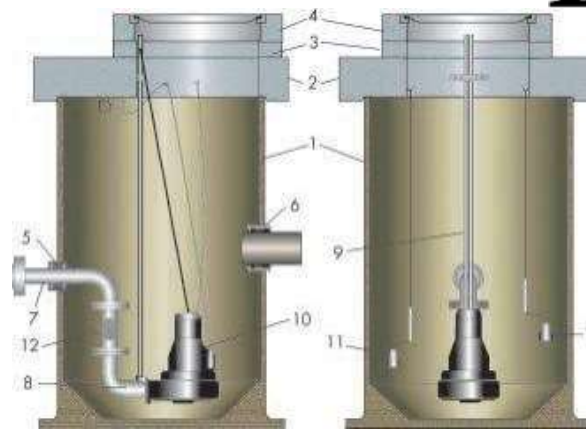


Inspection of the construction with the Frankfurt city agencies

Manhole and pressure drainage

Construction 1994 – 2012

| | |
|----------------|--------------|
| Contract value | |
| Whole system: | 11.750.000.- |
| Execution | |
| Whole project: | 1992 - 2012 |
| Contact | |
| Customer: | Mr. Sadau |



MEYER ROHR + SCHACHT GMBH



Schächte aus Polycrrete

Construction and delivery of more than 3.000 pressure drainage systemes for Hamburg city with the Partner company Meyer Rohr und Schacht and Elektrotechnik Schnoor GmbH

pressure drainage means waste-water systemes, in which the domestic waste-water wick initiated the coming of the households connected to waste-water collection sumps and from there pumped into the pressure- line network.

Systems of this kind are in scattered often an economical alternative to gravity sewer, as this with decreasing population density, especially in terms of construction costs is often uneconomical.

Exhibition Fair in Munich



The material properties and dimensions are based on DIN 54 815. The molding material corresponds to the DIN 16946-Part 2 type 1140.

The strong combination of resin and aggregates allows the recording of high compressive and bending stresses in thin wall thicknesses and reduced pipeweight. This has the consequence. : Less freight and installation costs!

New production methods make it possible for even complex curvatures manholes with various pipe connections, channels and inner and outer subfalls ready for installation within a few days to deliver to the site. POLYCRETE® system manholes made of polymer concrete material and correspond perfectly to the pipes in the wall construction.

The channel made of seamless POLYCRETE and is Designed to flow requirements and has a very smooth, low-maintenance pipe invert. At the bottom of a manhole, all types of pipes with the corresponding appropriate fittings can be connected.



MEYER ROHR + SCHACHT GMBH



Innovative Systems (Harman Automotive Division) Hamburg

Volume about 11.000 m³

Contract value

Whole system: 9.750.000.-

Execution

Whole project: 2008 - 2010

Contact

Customer: Mr. Schmidt



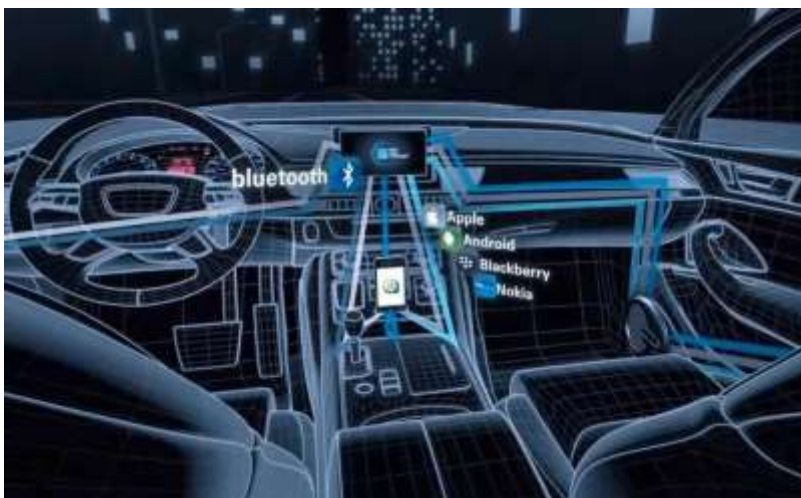
Innovative Systems is the daughter company of the current HARMAN Automotive Division and to the one of the acquisition of the German car radio manufacturer by the U.S. firm Becker HarmanInternational Industry in 1995 and produced more acquisitions of variouse companies acoustics





Harman International in 1953 provided the first speaker system for vehicles, 1966, the first specially designed speaker for vehicle's door and 1985, the first brand JBLsound system for Ford vehicles. Just like Harman International in the audio field Becker applies since its founding in 1949 as a driver of innovation and "Mercedes of car radios."

The reputation was not for nothing, not least built Daimler-Benz exclusively Beckerradio in his Nobel vehicles. 1953, the legendary "Becker Mexico" with the world's first automatic tuning and FM receiver on the market.



Heinrich Schütt KG Hamburg

(Schütt Steel)

Volume about 18.000 m²

Contract value

Whole system: 14.220.000.-

Execution

Whole project: 1992 - 2004

Contact

Customer: Mr. Wolff



The Heinrich Schütt KG is a traditional company that has been successful since 1871 in the steel market. schütt steel in 2004, has moved its location from the Eiffestraße / Normannenweg into Andreas Meyer Road in order to build an ultra modern high-bay warehouse, and a powerful administration. The close connection to the railway is ideal for a quick management of supplier and customer contracts.



Through a customer-oriented storage is fast turnarounds finished product ranges.

Development of new products or modified grades to optimized production processes in Schütt or even in your company.

The branches in Gelsenkirchen and Neubrandenburg work on the same principles as in Hamburg. Partly self-standing ranges are strictly based on the needs of customers.



Upon request, we will gladly provide additional customers and projects, you can either ask for our work performance, quality and punctuality.



Warehouse for Steel plates



Schütt Steel Administration



Otto von Bahrenn park

Hamburg headquarters

Conversion and extension of commercials and residentals

Volume about 39.000 m²

Contract value
Whole system: 31.124.000.-

Execution
Whole project: 1996 - 2011

Contact
Customer: Mr. Naeve

The gas plant was built 1892-1895 between the *Mendelssohn street* at north and the *gas street* at south, designed by the architect and civil *engineer Schaar*.



The Bahrenfeld gas station was operated in 1896 as a successor to the gas station on the *great elb* street from the former *altona* gas plant.



1938 after the closure was used as generating system. After the war destruction from 1945 to the 50th was still crude benzene from the other gas stations in Hamburg, stored and processed on the



property. The plant was used as a reservoir and compressing station. That should be transformed into high-quality commercial and residential purposes listed under Asked factory area. (earlier)

Hamburgs First Class Hotel „Das Gaswerk“ (today)



The gas works site was purchased in 1994 by a group of HPV investors. The idea was to convert the former gas works under preservation in accordance with aspects of a modern style in a large-scale plant for commercial purposes, and a modern community center with all its facilities. It was registered in 1996 in the memorial list.

In addition to the ensemble, the administrative buildings, the watch house, the coal tower, four large halls and elevated track, a scale and rotation stage for the railroad. It is now next to the historic warehouse district of the largest contiguous areas listed in Europe.

Gas street office an open office



Meeting room

Remodeling and renovation building



Remodeling and renovation building 3 Fitness center



Planning model 1



execution



Planning model 2



Current projects 2011/2012

**Office block „Rahlstedter Tiefbau KG“
At glinde, hamburg**
Volume about 2.400 m³

Contract value
Whole system: 2.750.000.-

Execution
Whole project: 2011 - 2012

Contact
customer: Mr. Antonatzi

Construction of an office and warehouse
Complete set-up, according to the wishes
and requirements of tenants.



Production facility with offices
Unipack GmbH, south hamburg

Volume 2.100 m³

contract value
Whole system : 2.450.000.-

execution
Whole project: 2011 - 2012

Contact
Customer Mr. Tana

Construction and extension of a
production facility for plastic
film, with a modern office.
We modernized an existing building
which its hall is created on a pile
foundation.
The turnkey project was handing over
in August 2012.



Construction and Modernization of Headquartes of the Marzipan factory Hamburg

Volume about : 22.000 m²

Contract value

Whole system: 19.450.000.-

Execution

Whole project: 2011–2015

Contact

Customer: Mr. Naeve



Modernization, upgrading and
construction of a 100,000 square
meter plot, with existing buildings which
a part of them are listed.

The land was owned by Dr. Oetker, Marzipan
was Produced here.

Test house building 23.

The building is completely renovated
and got a new facade



Planning mode Building 23



Building 4 was domesticated Built in
The building is masonry
reprocessed.



Building 23 gets an exterior aluminium component facade at the highest level, from *Schücoverbaue* the manufacturer of high quality external profiles. The outer surfaces are coated with a standard brown-beige color powder.



At the interior area between buildings 24 and 26, the civil engineering works are carried out for the new building 25



Earthworks between buildings 24 and 26. Surface drainage works.



construction works of the new buildings 25



Construction works of building 25 from the perspective of building 26.



Preparatory works for the foundation of building 25.



Earthworks of the marzipan factory,
soil excavation



View: the national monument building
24, the entire building is being renovated,
and the facade wall refurbished.



View: Building 24 b, this part is to be
redeveloped in the building is an
annex constructed from precast
concrete elements.



Building 24 c, here you can see
the already installed precast concrete element
wall



Building 24 c staff,
in preparing for the next installation of
the precast concrete elements.



Building 24 c staff,
in preparing for the next installation of
the precast concrete elements.



Precast plant of the BPapC GmbH



The BPapC GmbH has been taken over the concrete plant of Rathenau Beton in 2009.

Since that time Mr. Ahmed Alzoubeidi manages it successfully according to our company's philosophy.

Our company's philosophy is:

Quality, customer-oriented finishing, Fairness, word loyalty, and innovativeness.

Since the acquisition it has been continuously modernized and fitted, these investments made our company heavily competitive on the market.

With the modern technologies for the removal and re-processing of rock, gravel, sand, concrete and precast concrete products for roads, building and constructions, with the company expansion, a truck repair shop, an in-house planning office for precast concrete products and a forwarding agent for long-distance and local traffic, and last but not least the equipments with modern management technologies. along the lines of "no way is too long and no effort is too hard " the BPapCGmbH remains as the reliable partners for its customers in all business areas .

From planning up to finishing

Mr. Ahmed Alzoubeidi at the meeting with the production manager on the Implementation of construction plans.



Employee corrects the plan

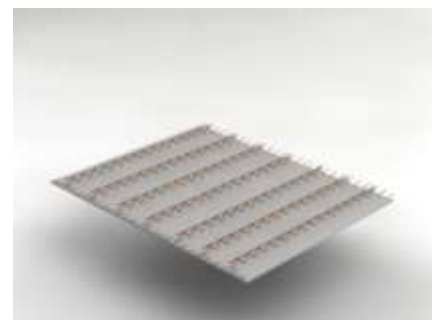
The production manager gives change orders in the computer, from there goes directly to the machine.



Computerized construction planning



Double element concrete wall with a door cut "on computer,,



Filigree ceiling element

Double element concrete wall With a door cut" implemented,,



Filigree ceiling element

Beton Werk BPaPC GmbH

The concrete and precast concrete element factories in *keels*, *Stelle* and *Bargtheide* are 6 days a week, 12 hours in 2 shifts at producing.

The concrete mostly, will be extended with our own carpool.



Concrete plant Stelle



Concrete plant Bargtheide

With a part of the fleet



Concrete element fabrication plant

Covering an area of 48.000 m²



Pipe and manhole production line



Measurement control of the precast paving



Special Production of ashlars



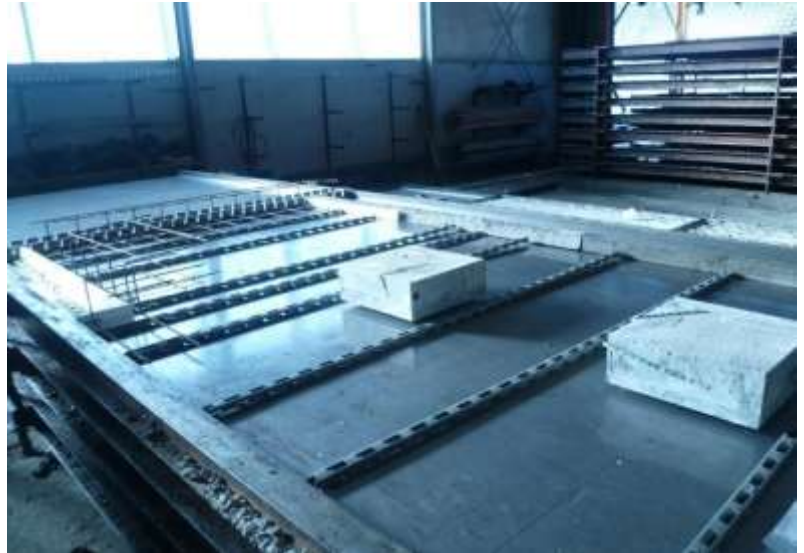
Production table for wall elements



Director Ahmed Alzoubeidi during his tour of the plant



The production table for
a filigree ceiling



Trust is good, but control is better
(a german adage)



At the dosing adjustment



Fully automated Round steel-cutting machine



Form building department



Work shop



Out door storage

Travensen



Manholes



Filigree ceiling with
cabel feeder pipes



Filigree ceiling storage



Transport der Filigree deiling
transportation tot he storage area



Precast concrete wall storage



The fleet

Pumping trucks



Truck mixer Fleet



Port of *Hamburg*
Construction site overnight use
Truck mixer and pumps
In continuous use



A pumping truck at foundation
works in *Bahrenfeld*



